

Module Management System (MMS)

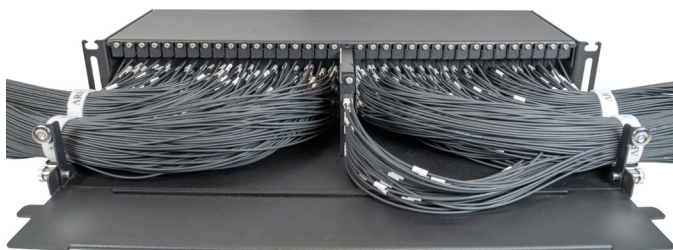
Rackmount Panels

The Module Management System (MMS) Rackmount Panel provides a 2RU sized mounting interface for WDM modules or splitter modules and supports an unused connector parking lot.

It is designed for use inside of outdoor cabinets in FTTH deployments.



Accepts ARIA Splitter or WDM Modules With MMS Mounting Brackets



Features

- Compact profile preserves vital rack space
- Modules are easy to attach with a single screw
- Cable tie down brackets support organized cable management
- Magnetic latching and easy to remove door provides an integrated port ID chart holder
- Parking lot for unused connectors
- Supports 36 1x32 splitter modules or 1,152 fibers
- Supports 36 10CH WDM modules or 360 channels

Specifications

Rack Units	2
Dimensions (Inches)	3.5 x 17.4 x 10.0 (HxWxD)
Supported Splitter Configurations	1x2, 1x4, 1x8, 1x16, or 1x32
Support WDM Configurations	4CH, 8CH, or 10CH
Module Capacity	36
Splitter Capacity	1,152 Fibers
WDM Capacity	360 CH
Mounting	19" Frames
Chassis Material	1.5mm Thick Steel
Material Finish	Black Powder Coat
Weight (Empty) (lbs)	N/A

Part Number

MMS-2RU-EMPTY

3.5x17.0x8.2" 2RU black powdercoated aluminum Module Management System (MMS) Rackmount Panel. Supports attachment of 36 modules and includes (4) #12-24x1/2" rackmount screws.