

# Exterior Terminal Box (ETB) Series

## Outdoor Enclosures

Exterior Terminal Box (ETB) Series outdoor enclosures are small and 2-fiber capacity supporting patch & splice.

They is designed for outdoor use on the exterior of a residence in fiber to the home (FTTH) applications.

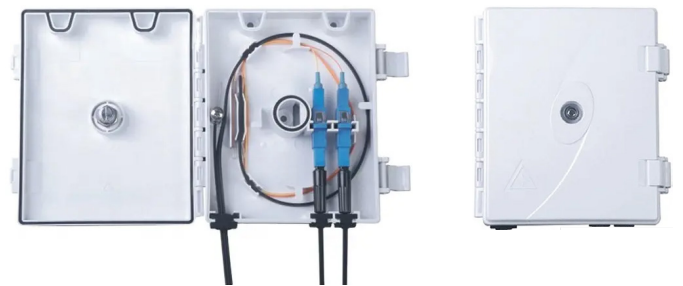
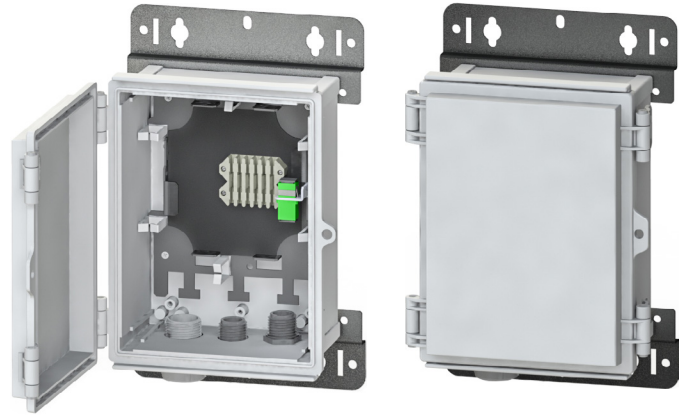
Typically, a flat drop drop cable from a hardened terminal mounted on a pole or inside of a pedestal outside of a subscriber's residence is brought into the ETB and spliced to a pigtail. A patch cord connects this pigtail to another enclosure inside the residence such as the Access Terminal Box (ATB).

The interior supports drop cable slack storage.

Versatile and economical design provides an easy to use and low cost enclosure.

### Features

- Compact and space efficient design
- Gray UV resistant material
- Hinged and gasketed lid provides a water and dust resistant seal
- Secures with snap latches
- Cost-effective design with premium features



### Compact ETB



### Specifications

<b>Dimensions (Inches)</b>	6.0 x 5.3 x 1.4 (HxWxD)
<b>Fiber Capacity</b>	2
<b>Cable Entry Openings</b>	(2) 3.0 and (1) 8.0 x 4.3
<b>Material</b>	ABS + PC Plastic
<b>Material Finish</b>	Light Gray
<b>Weight (Empty) (lbs)</b>	1.0
<b>IP Rating</b>	IP65
<b>Unique Features</b>	Keyed Lock

### XL ETB



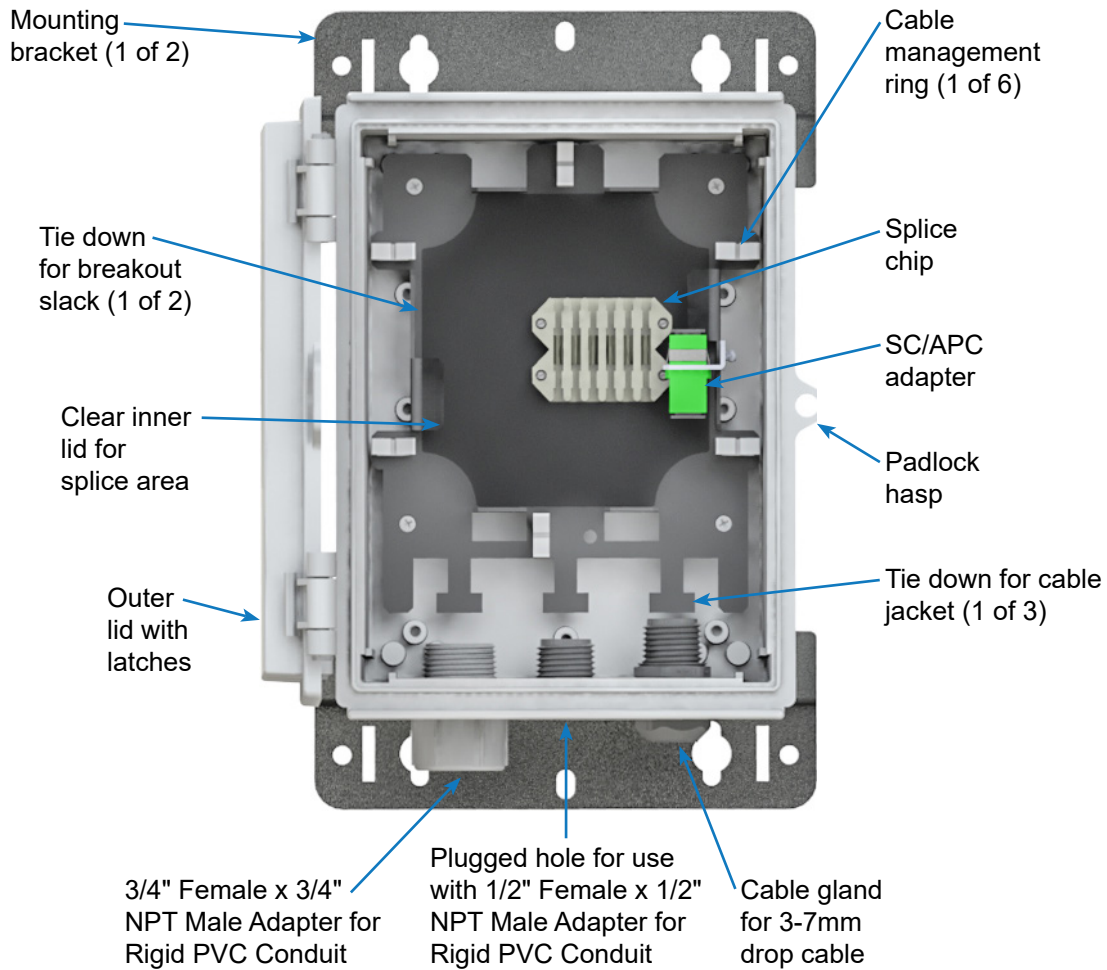
### Specifications

<b>Dimensions (Inches)</b>	8.3 x 6.3 x 3.9 (HxWxD)
<b>Fiber Capacity</b>	1 (SC) or 2 (LC)
<b>Cable Entry Openings</b>	(1) 1.1", (1), 0.89", (1) 0.71"
<b>Material</b>	ABS Plastic
<b>Material Finish</b>	Light Gray
<b>Weight (Empty) (lbs)</b>	3.0
<b>Unique Features</b>	PVC & Cable Entry Fittings

# Exterior Terminal Box (ETB) Series

Outdoor Enclosures

## XL Interior View



## Part Number

ETB- 1 - 2 - 3 - 4

**1** Enclosure  
CT = Compact  
XL = XL

**2** Ports  
SX = Simplex  
DX = Duplex

**3** Adapter Type  
SCA = SC/APC  
SCU = SC/UPC  
LCA = LC/APC  
LCU = LC/UPC

**4** Pigtail Quantity  
0PT = None  
1PT = One  
2PT = Two