

Multi-Panel (MPX) Series

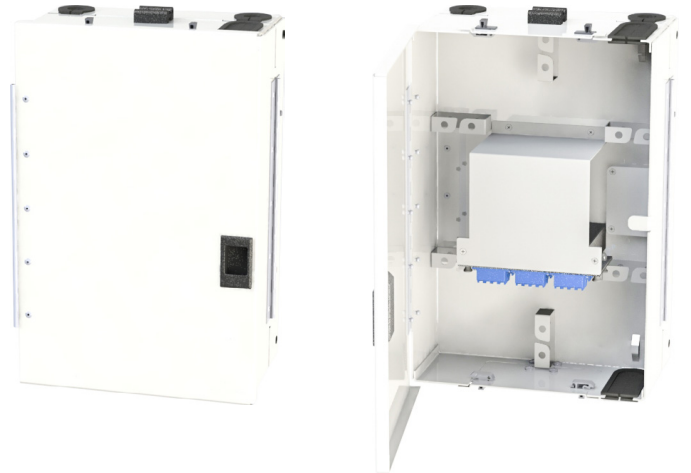
Indoor Enclosures

Multi-Panel (MPX) Series Wallmount Enclosures feature layered patch and splice compartments for a reduced footprint and an intelligent layout for enhanced component accessibility, cassette support, and cable management.

Support for cassettes with front and rear facing ports and access doors support easy inspection and cleaning.

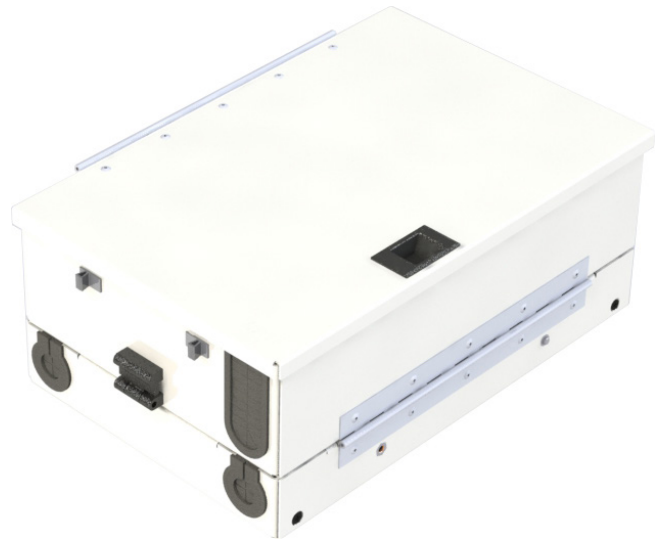
The cable management rings support large amounts of slack storage.

Hinged removable trays and surrounding cable management rings support easy splicing and slack storage.



Features

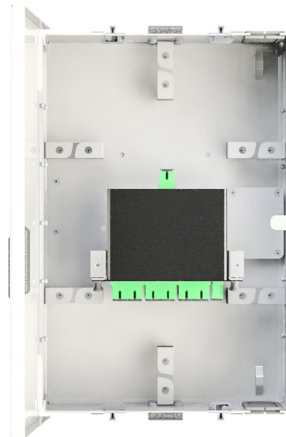
- A removable shroud protects 900µm pigtail connectors from mishandling
- Thumbscrew and padlock hasp provide splice compartment security
- Support for two LGX cassettes with front and rear facing adapters
- The bulkheads are raised above the cable management rings for easy access
- Integrated cable clamps easily secure cables and grommets support midspan access ring cuts
- Patch compartment connector access doors support easy inspection and cleaning
- Patch compartment cable management rings support up to 10ft of slack for each drop cable



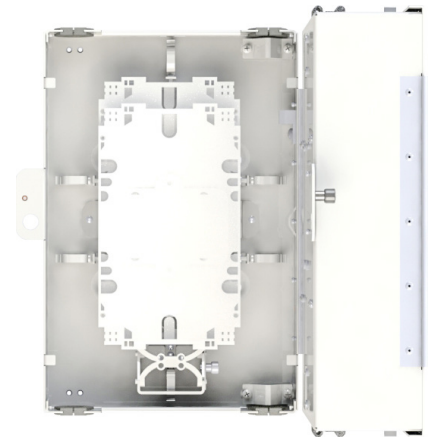
Views



Closed



2X LGX Patch Section Open

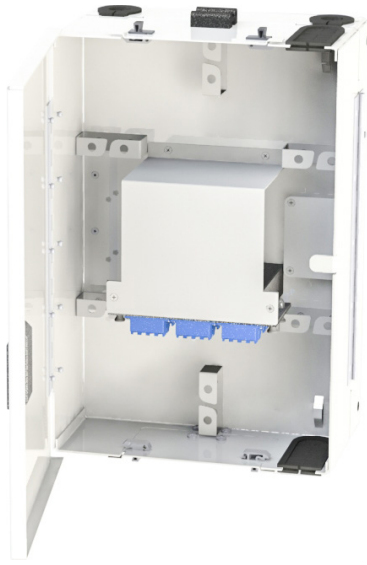


2X LGX Splice Section Open

Multi-Panel (MPX) Series

Indoor Enclosures

Multi-Panel 2X LGX



Specifications

Dimensions (Inches)	13.2 x 8.6 x 5.5 (HxWxD)
Adapter Plate Capacity	2
Splice Tray Capacity	2
Fiber Capacity	24 SC or 48 LC (Ribbon)
Cable Entry Openings	Patch Side: (2) 1"x2" Splice Side: (4) 1.1"
Material	1.5mm Thick Aluminum
Material Finish	White Powder Coat
Weight (Empty) (lbs)	5.0

Multi-Panel 4X Module



Specifications

Dimensions (Inches)	14.2 x 8.6 x 4.2 (HxWxD)
Module Capacity	4
Splice Tray Capacity	4
Supported WDM Configurations	4CH, 8CH, or 10CH
Supported Splitter Configurations	1x2, 1x4, 1x8, 1x16, or 1x32
Cable Entry Openings	Splice Side: (4) 1.1"
Material	1.5mm Thick Aluminum
Material Finish	White Powder Coat
Weight (Empty) (lbs)	5.0
Notes	LGX patch compartment is replaced with a module compartment

Accessories



Medium Compression Fitting for Splice Compartment Supports Cable O.D.: 0.29"-0.60" (P/N: CF-MD)



Three Slot Flat Drop Compression Fitting with Removable Spacers for Splice Compartment (P/N: CF-3S-FD)



Flat Drop Compression Fitting for Splice Compartment P/N: N3/4"B-H1-(8.1*4.5)

Multi-Panel (MPX) Series

Indoor Enclosures

Part Number

MPX- 1 2 3 4 5 6 7 8 9 10

1 Enclosure

2X = Multi-Panel 2X LGX
4X = Multi-Panel 4X Module*

*Only splice tray option needed

2 Adapter Plate Type

06 = 6 Port (SC/FC/ST)
08 = 8 Port (SC/FC/ST)
12 = 12 Port (SC/LC/
FC/ST)
24 = 24 Port (LC)

3 Adapter Plate Quantity

X = X Plates

4 Adapter Type

SC = SC
LC = LC
FC = FC
ST = ST

4 Polish Type

U = Singlemode UPC
A = Singlemode APC*
M = Multimode PC

*Unavailable for ST

5 Pigtail

N = No Pigtail or Pre-Term
M = 900 μ m in Mesh
D = Distribution Style (MIC)
R = Ribbon in Mesh

Note: 3 meter pigtail length is standard

6 Fiber Type

S = SM 9/125 μ m G.652.D
B = SM 9/125 μ m Bend Insensitive G.657.A1
1 = MM 62.5/125 μ m OM1
2 = MM 50/125 μ m OM2
3 = MM 50/125 μ m OM3
4 = MM 50/125 μ m OM4

7 Splice Trays

0ST = 0 Trays
1ST = 1 Tray
2ST = 2 Trays
3ST = 3 Tray*
4ST = 4 Trays*

Note: these enclosures come standard with 24-fiber (5"x8") stranded fiber or 72-fiber ribbon fiber splice trays
* Module configuration only

8 Stub Cable Construction

Leave Blank for No Stub

D = Distribution (I or X)
B = Breakout (X)
M = Micro Round (I, X, or O)
L = Loose Tube (X or O)
R = Ribbon (I, X, or O)
F = Flat Drop (Up to 24F) (O)

(I) = Indoor Only
(X) = Indoor/Outdoor Only
(O) = Outdoor Only

9 Stub Jacket Type

Leave Blank for No Stub

Choose 1 Option for Each Feature:
I = Indoor or X = I/O or O = Outdoor
R = OFNR or P = OFNP or L = LSZH*
N = Non-Armored or A = Armored

*Leave Blank for Outdoor Cable

10 Stub Length

Leave Blank for No Stub
Add -PE for a Pulling Eye

XXXF = XXX Feet
XXXM = XXX Meters