

Access Terminal Box (ATB)

Indoor Enclosures

The Access Terminal Box (ATB) is a small, 2-fiber capacity, patch & splice wallmount enclosure.

It is designed for indoor use next to an optical network terminal (ONT) in fiber to the home (FTTH) applications.

Typically, an indoor drop cable from an Exterior Terminal Box (ETB) mounted on the outside of a subscriber's residence is brought into the ATB and spliced to a pigtail. A patch cord connects this pigtail to the ONT.

Versatile and economical design provides an easy to use and low cost enclosure.

Wallmounting hardware and splice sleeves are included.



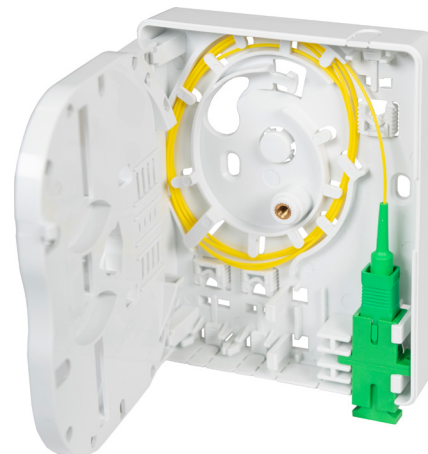
Features

- Compact and space efficient design
- Hinged removable splice tray
- 2-fiber capacity
- Tool-less lid with optional screw does not require external clearance for removal
- Dual covered and slotted cable entry openings

Specifications

Dimensions (Inches)	4.0 x 3.1 x 1.0 (HxWxD)
Fiber Capacity	2
Pigtail Fiber Type	Singlemode G.657.A1
Cable Entry Openings	(2) 0.3" x 0.6"
Material	White ABS Plastic
Weight (Empty) (lbs)	0.5

Views



Part Number

ATB- 1 - 2

1 Adapter Type

Leave blank for no adapters

1 SCA = 1 Simplex SC/APC Adapter
 2 SCA = 2 Simplex SC/APC Adapters
 1LCA = 1 Duplex LC/APC Adapter

2 Pigtail Quantity

Leave blank for no pigtail

1PT = One 900 μ m Pigtail
 2PT = Two 900 μ m Pigtails

Note: 1 meter pigtail length is standard