

SPLWM Series

Wallmount Enclosures



SPLWM 1



SPLWM 2



SPLWM 3

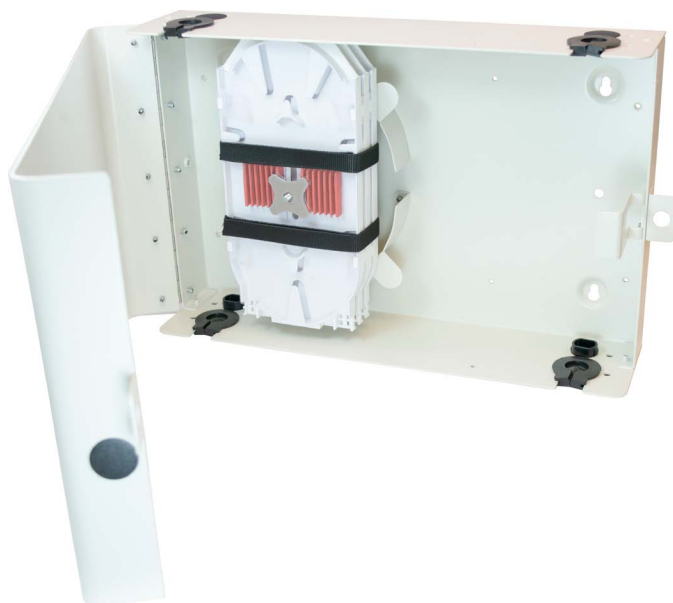
Overview

SPWLM Series Wallmount Enclosures are compact fiber splice enclosures.

The rear-hinged, 16 gauge steel, pad lockable door provides quick access to the enclosure interior.

The riser cable entrance slot accommodates most OSP cables and makes it easy to mount cable where riser cables already exist. Slack storage space behind the splice trays provides simple cable re-entry and access.

SPLWM 1

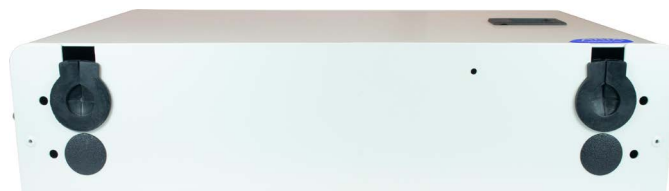


Features

- Spacious splice only wallmount enclosure allows for ample cable slack
- Multiple cable entry ports support a wide variety of cable diameters
- Easy to access and re-enter the enclosure
- Attached padlock hasp and lock kit option provides enhanced security

Specifications

Dimensions (Inches)	9.0 x 14.0 x 3.4 (HxWxD)
Fiber Capacity	216 Fibers Mass Fusion or 72 Fibers Single Fusion
Splice Tray Capacity	(4) 4"x6" splice trays, (2) 4"x7" splice trays, (3) 4"x8" splice trays, or (4) 4"x9" splice trays
Cable Entry Openings	(8) 1.10"
Material	1.5mm Thick Steel
Material Finish	White Powder Coat
Weight (Empty) (lbs)	7.0

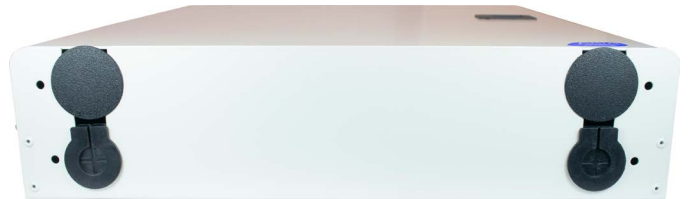


SPLWM 2



Specifications

Dimensions (Inches)	16.0 x 15.0 x 3.4 (HxWxD)
Fiber Capacity	216 Fibers Mass Fusion or 72 Fibers Single Fusion
Splice Tray Capacity	(4) 4"x6" splice trays, (2) 4"x7" splice trays, (3) 4"x8" splice trays, (3) 4"x9" splice trays, or (3) 5"x12" splice trays
Cable Entry Openings	(4) 1.18" and (4) 1.50"
Material	1.5mm Thick Steel
Material Finish	White Powder Coat
Weight (Empty) (lbs)	11.5

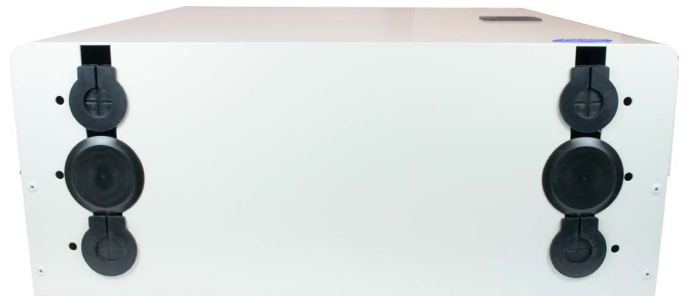


SPLWM 3



Specifications

Dimensions (Inches)	16.0 x 15.0 x 6.2 (HxWxD)
Fiber Capacity	432 Fibers Mass Fusion or 144 Fibers Single Fusion
Splice Tray Capacity	(7) 4"x6" splice trays, (4) 4"x7" splice trays, (6) 4"x8" splice trays, (6) 4"x9" splice trays, or (6) 5"x12" splice trays
Cable Entry Openings	(8) 1.18" and (4) 1.50"
Material	1.5mm Thick Steel
Material Finish	White Powder Coat
Weight (Empty) (lbs)	15.0



SPLWM Series

Wallmount Enclosures

Accessories



Small Compression Fitting Supports Cable O.D.: 0.230"-0.546" for SPLWM-1
P/N: CF-SM



Medium Compression Fitting Supports Cable O.D.: 0.25"-0.49"
P/N: CF-MD



Three Slot Flat Drop Compression Fitting with Removable Spacers
P/N: CF-3S-FD



Large Compression Fitting Supports Cable O.D.: 0.59"-0.99" For SPLWM-2/3
P/N: CF-LG



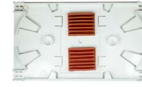
Grounding and Bonding Kit
P/N: AWMGB-KIT



Lock Kit
P/N: AWM-LOCK-KIT



12 Fiber Single Fusion Splice Tray (4"x6")
P/N: 4612CWMP



24 Fiber Single Fusion Splice Tray (4"x7")
P/N: 4724CWMPST



72 Fiber Mass Fusion Splice Tray (4"x7")
P/N: 4772CWMPST



24 Fiber Single Fusion Splice Tray (4"x8")
P/N: 4824CWMP



72 Fiber Mass Fusion Splice Tray (4"x8")
P/N: 4872RCWM



24 Fiber Single Fusion or 48 Fiber Mass Fusion Splice Tray (4"x9") (P/N: 4812C4RMTB)



48 Fiber Single Fusion or 96 Fiber Mass Fusion Splice Tray (5"x12") SPLWM 2/3 (P/N: 5712CWMP48ST)



48 Fiber Single Fusion Splice Tray (5"x12") SPLWM 2/3 (P/N: 5712CWMP-48STX)

Part Number



1 Enclosure
1 = SPLWM 1
2 = SPLWM 2
3 = SPLWM 3

2 Splice Tray Quantity
00 = 0 Splice Trays
01 = 1 Splice Tray
02 = 2 Splice Trays
03 = 3 Splice Trays
04 = 4 Splice Trays
05 = 5 Splice Trays
06 = 6 Splice Trays
07 = 7 Splice Trays

3 Splice Tray Type
000000 = No Splice Trays
12S00R = 12-Fiber (4"x6") Single Fiber Splice Tray
24S4X7= 24-Fiber (4"x7") Single Fiber Splice Tray
4X772R = 72-Fiber (4"x7") Ribbon Fiber Splice Tray
24S4X8 = 24-Fiber (4"x8") Single Fiber Splice Tray
4X872R = 72-Fiber (4"x8") Ribbon Fiber Splice Tray
24S48R = 24-Fiber (4"x9") Single Fiber or 48-Fiber Ribbon Fiber Splice Tray
48S96R = 48-Fiber (5"x12")Single Fiber or 96-Fiber Ribbon Fiber Splice Tray*
48S00R = 48-Fiber (5"x12")Single Fiber Splice Tray*
*SPLWM-2 and SPLWM-3 Only

4 Lock
N = No Lock
L = Lock

5 Grounding Kit
N = No Grounding Kit
G = Grounding Kit