

RDP

Rackmount Enclosures

ARIA RDP rackmount enclosures are 14" deep 1RU panels with the capacity to accept three LGX adapter plates.

RDP panels feature a unique sliding removable drawer which permits working at a comfortable level.

RDP panels are supplied fully loaded with adapter panels, pigtails, splice trays, and mounting brackets for both 19" and 23" racks. Recessed or flush mount brackets are also available.

The front door is made of Plexiglas® allowing the user to see inside and the sliding tray features radius guides to secure cable slack and prevent kinks.



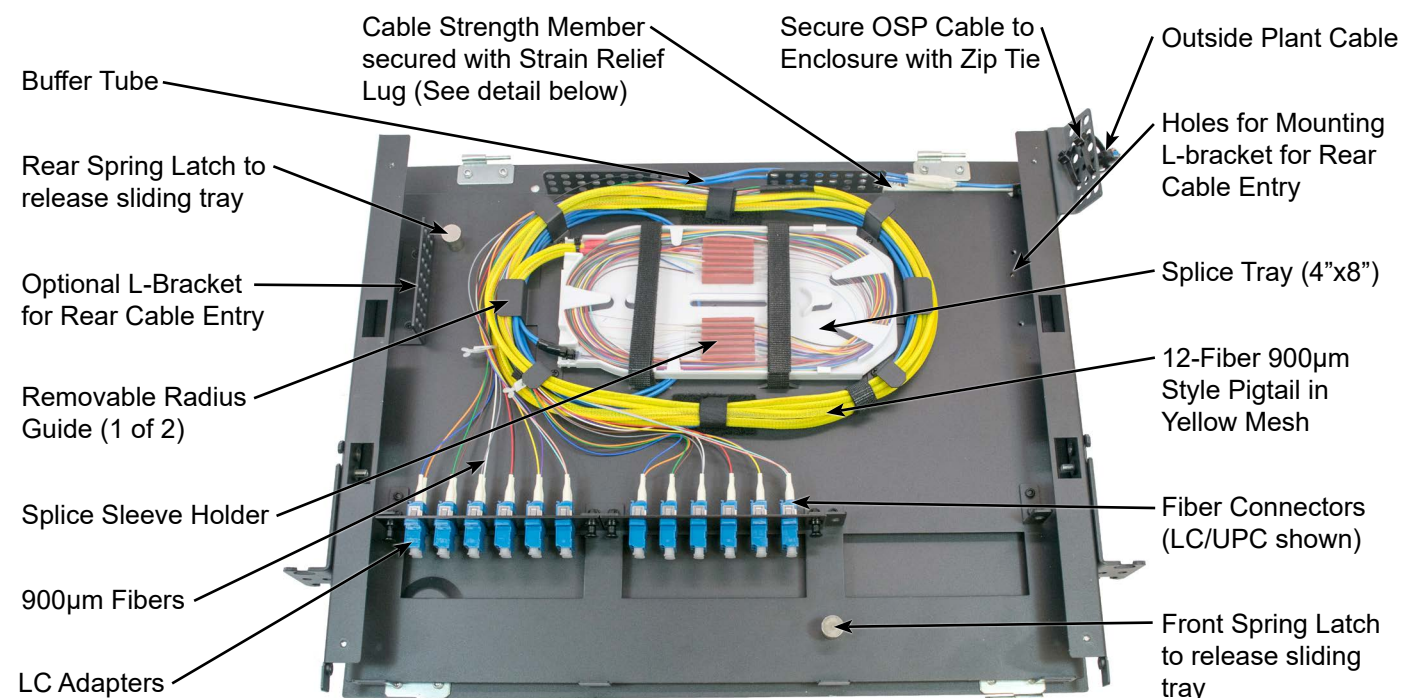
Front View



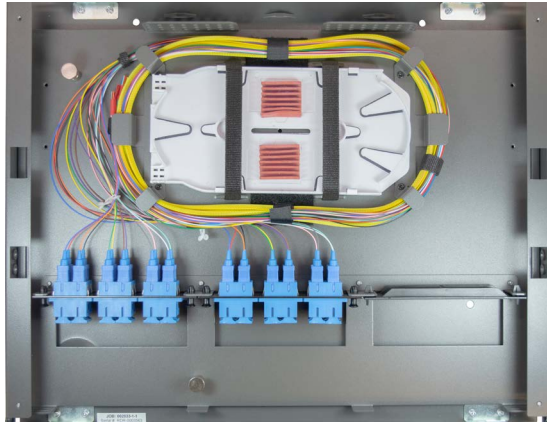
Specifications

Rack Units	1
Dimensions (Inches)	1.75 x 17.0 x 14.0 (HxWxD)
Adapter Plate Capacity	3
Fiber Capacity	36 (SC) or 72 (LC) (Ribbon)
Mounting	19" or 23" Frames
Material	1.5mm Thick Steel
Material Finish	Black Powder Coat
Weight (Empty) (lbs)	9.5

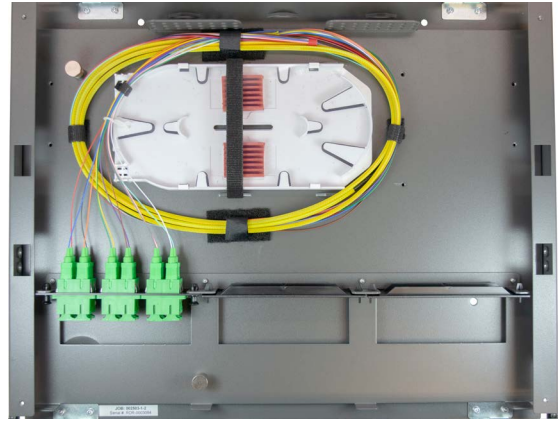
Detailed View



Cassette Ready Option



Standard RDP



Cassette Ready RDP

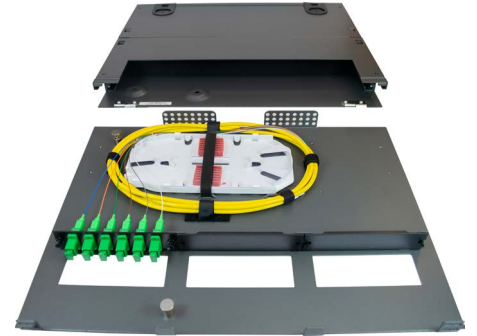
Latching, Sliding, and Removable Tray System



A spring latch at the front of the sliding tray when lifted permits the tray to slide forward or backward.

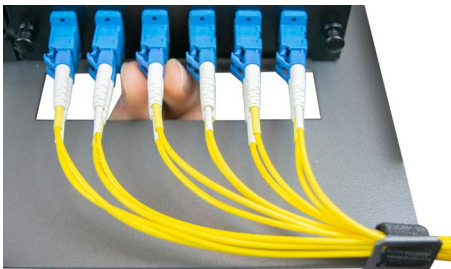


The sliding tray locks in the forward position and provides access to the splice trays and connectors for splicing, cleaning, and testing. A spring latch at the rear of the tray when lifted allows the sliding tray to be removed.



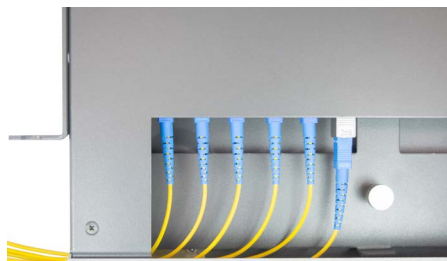
The tray can be removed and brought to a comfortable level on a table or workstation for easy access to the splice trays and connectors

Jumper Management



Cutouts below the adapters support easy connector removal and tie down locations on the front of the tray provide jumper management.

Jumper Bend Radius



4.0" of space between the adapter plate and door provides ample room for proper patchcord bend radius even with an attenuator connected.

Cable Strain Relief



Top or bottom cable entry is supported. Attach the strain relief bracket in the desired orientation and secure the cable jacket.

Accessories



Strain Relief Bracket
P/N: SRB-KIT-B



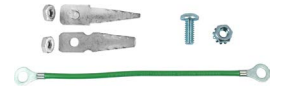
Extended Strain Relief Bracket
P/N: EX-SRB-KIT



1RU Perforated L-Bracket (P/N: 1RU-TRAY-L-BRACKET)



Flush Mount Brackets (P/N: 1RU-ML-FMB-EM-B)



Grounding Kit
P/N: RM-GROUNDING-KIT

Part Number



1 Option
00 = No Option
CR = Cassette Ready

2 Adapter Plate Type
06 = 6 Port (SC/FC/ST)
08 = 8 Port (SC/FC/ST)
12 = 12 Port (SC/LC/FC/ST)
24 = 24 Port (LC) (Ribbon Only)

3 Adapter Plate Quantity
1 = 1 Plate
2 = 2 Plates
3 = 3 Plates

4 Adapter Type
SC = SC
LC = LC
FC = FC
ST = ST

4 Polish Type
U = Singlemode UPC
A = Singlemode APC*
M = Multimode UPC

*Unavailable for ST

5 Pigtail
N = No Pigtail or Pre-Term
M = 900 µm in Mesh
D = Distribution Style (MIC)
R = Ribbon in Mesh

Note: 3 meter pigtail length is standard

6 Fiber Type
S = SM 9/125µm G.652.D
B = SM 9/125µm Bend Insensitive G.657.A1
1 = MM 62.5/125µm OM1
2 = MM 50/125µm OM2
3 = MM 50/125µm OM3
4 = MM 50/125µm OM4

7 Splice Trays
N = None
Y = Yes*

*This enclosure comes standard with 4"x8" splice trays in 24 fiber single fiber fusion or 6 position ribbon fiber mass fusion configurations.

8 Stub Cable Construction
Leave Blank for No Stub
D = Distribution (I or X)
B = Breakout (X)
M = Micro Round (I, X, or O)
L = Loose Tube (X or O)
R = Ribbon (I, X, or O)
F = Flat Drop (Up to 24F) (O)

(I) = Indoor Only
(X) = Indoor/Outdoor Only
(O) = Outdoor Only

9 Stub Jacket Type
Leave Blank for No Stub
Choose 1 Option for Each Feature:
I = Indoor or X = I/O or O = Outdoor
R = OFNR or P = OFNP or L = LSZH*
N = Non-Armored or A = Armored*

*Leave Blank for Outdoor Cable

10 Stub Length
Leave Blank for No Stub
Add -PE for a Pulling Eye
XXXXF = XXX Feet
XXXM = XXX Meters