

High Density Splice (HDS)

Rackmount Enclosures

Overview

ARIA's High Density Splice (HDS) Rackmount Panel provides the ability to patch and splice 288 fibers using LC connectors while only occupying 2 rack units.

The adapter keyways are oriented left and right for easy connector access and feature VFL compatible shutters.

The front of the panel features fiber management rings, a clear plexiglass lid that can be removed for enhanced connector access, and generous jumper entry openings.

The rear of the panel features multiple tie down points and strain relief options, ample fiber management rings for ribbon organization, and fanout kit holders that provide protection for the 900 μ m connector boots.

Features

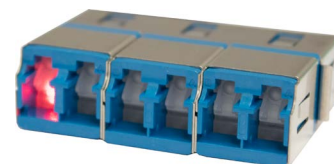
- High Density Design Intended for Data Center Applications Supports 288 Fibers
- Designed for Ribbon Pigtail Splicing
- VFL Compatible Shuttered LC Adapters Do Not Make Ferrule Contact and Support Easy Connector Access
- Removable Lids Enhance Component Access
- Fiber Management Rings Protect and Organize Fiber
- Fanout Kit Holders Protect the 900 μ m Connector Boots



High Density LC Adapters



Easy Connector Access



VFL Compatible Shutters

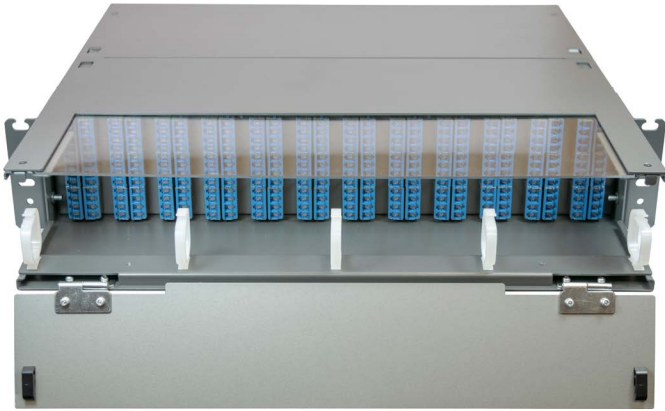
Specifications

Rack Units	2
Dimensions (Inches)	3.5 x 17.0 x 17.0 (HxWxD)
Fiber Capacity	288
Mounting	19" or 23" Frames
Material	1.5mm Thick Steel and Alum.
Material Finish	Dark/Light Gray Powder Coat
Weight (Empty) (lbs)	17.0

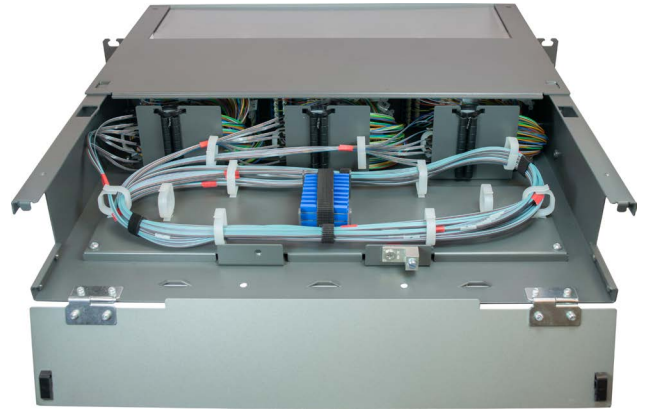
High Density Splice (HDS)

Rackmount Enclosures

Designed for High Density Patching and Splicing



Front View



Rear View (with Rear Lid Removed)

Accessories



Strain Relief Bracket
P/N: STD-SRB-KIT



Extended Strain Relief Bracket
P/N: EX-SRB-KIT

Part Number



1 Adapter Type

Singlemode
LCU = LC/UPC
LCA = LC/APC

Multimode
LCM = LC/UPC

2 Fiber Type

S = SM 9/125µm G.652.D
B = SM 9/125µm Bend Insensitive G.657.A1
1 = MM 62.5/125µm OM1
2 = MM 50/125µm OM2
3 = MM 50/125µm OM3
4 = MM 50/125µm OM4

3 Stub Cable Construction

Leave Blank for No Stub

D = Distribution (I or X)
B = Breakout (X)
M = Micro Round (I, X, or O)
L = Loose Tube (X or O)
R = Ribbon (I, X, or O)
F = Flat Drop (Up to 24F) (O)

(I) = Indoor Only
(X) = Indoor/Outdoor Only
(O) = Outdoor Only

4 Stub Jacket Type

Leave Blank for No Stub

Choose 1 Option for Each Feature:
I = Indoor or X = I/O or O = Outdoor
R = OFNR or P = OFNP or L = LSZH*
N = Non-Armored or A = Armored*

*Leave Blank for Outdoor Cable

5 Stub Length

Leave Blank for No Stub
Add -PE for a Pulling Eye

XXXF = XXX Feet
XXXM = XXX Meters