

# High Density Patch (HDP) Series Rackmount Enclosures



## Overview

ARIA High-Density Patch (HDP) Series Rackmount Enclosures offer a high-density solution to increasingly limited rack space in overcrowded datacenters.

Four different HDP configurations allow for front-to-back patching as well as front-to-front cross-connect patching with LC and MPO connectors.

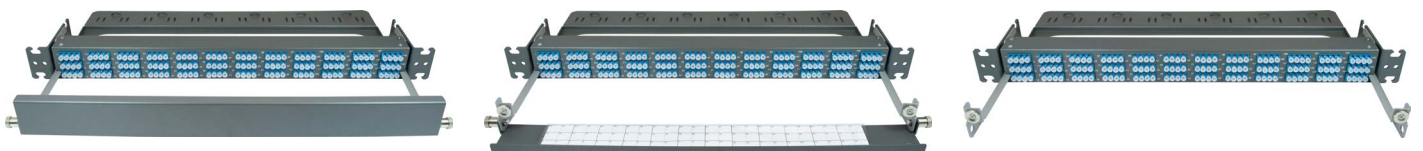
Up to 144 LC ports in a 1RU space maximizes space efficiency without compromising on important features such as integrated port labeling and jumper management.

Cross connect or pigtail/pre-term configurations work well in shallow cabinets or frames since they only require front access and have an extremely short depth.

## Features

- Support for up to 144-fibers in 1RU
- Front-to-front cross-connect configurations support 72-fibers for LC only configurations or 96-fibers for LC to MPO configurations.
- Front-to-back configurations support 144-fibers for LC only and LC to MPO configurations.
- Tool-less removable front door allows for easy access to the front-facing ports.
- Configurations with connectivity in the rear come with a fiber management tray in the rear.
- Optional LC and MPO shuttered adapters protect unpopulated ports & simplify the patching process.
- Magnetic port-identification chart holder on the front door simplifies the modification or viewing of port-identification information.

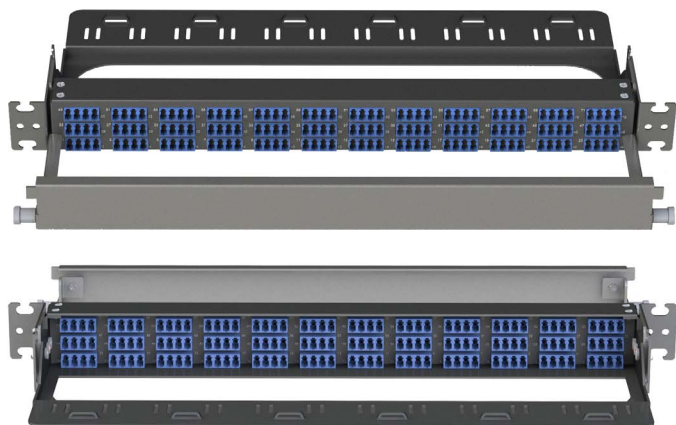
## Removable Front Door with ID Chart



# High Density Patch (HDP) Series

## Rackmount Enclosures

### LC to LC 144F



### Specifications

<b>Rack Units</b>	1
<b>Dimensions (Inches)</b>	1.75 x 17.1 x 10.9 (HxWxD)
<b>Front Connectivity</b>	LC
<b>Rear Connectivity</b>	LC
<b>Fiber Capacity</b>	144
<b>Mounting</b>	19" or 23" Frames
<b>Material</b>	1.5mm Thick Steel and Alum.
<b>Material Finish</b>	Dark/Light Gray Powder Coat
<b>Weight (Empty) (lbs)</b>	3.5

### LC to LC 72F Cross Connect



### Specifications

<b>Rack Units</b>	1
<b>Dimensions (Inches)</b>	1.75 x 17.1 x 9.6 (HxWxD)
<b>Front Connectivity</b>	LC
<b>Rear Connectivity</b>	None
<b>Fiber Capacity</b>	72
<b>Mounting</b>	19" or 23" Frames
<b>Material</b>	1.5mm Thick Steel and Alum.
<b>Material Finish</b>	Dark/Light Gray Powder Coat
<b>Weight (Empty) (lbs)</b>	4.0

### LC to MPO 144F



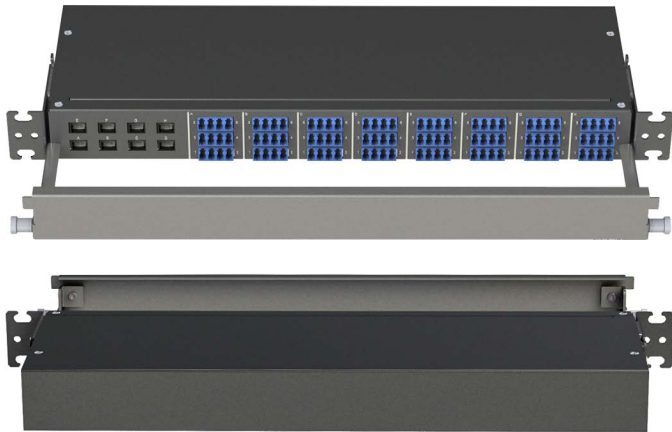
### Specifications

<b>Rack Units</b>	1
<b>Dimensions (Inches)</b>	1.75 x 17.1 x 9.6 (HxWxD)
<b>Front Connectivity</b>	LC
<b>Rear Connectivity</b>	MPO
<b>Fiber Capacity</b>	144
<b>Mounting</b>	19" or 23" Frames
<b>Material</b>	1.5mm Thick Steel and Alum.
<b>Material Finish</b>	Dark/Light Gray Powder Coat
<b>Weight (Empty) (lbs)</b>	4.0

# High Density Patch (HDP) Series

## Rackmount Enclosures

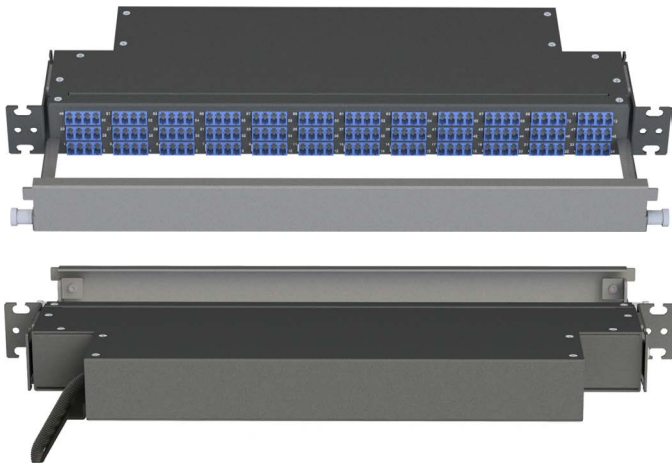
### LC to MPO 96F Cross Connect



### Specifications

<b>Rack Units</b>	1
<b>Dimensions (Inches)</b>	1.75 x 17.1 x 9.6 (HxWxD)
<b>Front Connectivity</b>	LC & MPO
<b>Rear Connectivity</b>	None
<b>Fiber Capacity</b>	96
<b>Mounting</b>	19" or 23" Frames
<b>Material</b>	1.5mm Thick Steel and Alum.
<b>Material Finish</b>	Dark/Light Gray Powder Coat
<b>Weight (Empty) (lbs)</b>	4.0

### LC to Pigtail or Pre-Term 144F



### Specifications

<b>Rack Units</b>	1
<b>Dimensions (Inches)</b>	1.75 x 17.1 x 9.6 (HxWxD)
<b>Front Connectivity</b>	LC
<b>Rear Connectivity</b>	Pigtail or Pre-Term
<b>Fiber Capacity</b>	144
<b>Mounting</b>	19" or 23" Frames
<b>Material</b>	1.5mm Thick Steel and Alum.
<b>Material Finish</b>	Dark/Light Gray Powder Coat
<b>Weight (Empty) (lbs)</b>	4.0



Ribbon Pigtail in PVC Coated Flexible Steel Conduit Shown

PVC coated flexible steel conduit provides rugged protection for fiber ribbons in a small and flexible package.

The 9.2mm or 0.36" OD conduit fits 144-fibers and has an easily managable 40mm or 1.57" bending radius.



# High Density Patch (HDP) Series

## Rackmount Enclosures

### Part Number

HDP- 1 1 1 1 2 2 3 4 5 6 6 6 7

#### 1 Type

LC144 = LC to LC 144F  
 LC72 = LC to LC 72F  
 MPO144 = LC to MPO 144F  
 MPO96 = LC to MPO 96F  
 LCPIG = LC to Pigtail 144F

#### 2 Shuttered Adapters

RA = Regular Adapters  
 SA = Shuttered Adapters

#### 3 LC Polish Type

U = Singlemode UPC  
 A = Singlemode APC  
 M = Multimode UPC

#### 4 Fiber Type

Leave Blank for LC to LC 144F  
 S = SM 9/125µm G.652.D  
 B = SM 9/125µm Bend Insensitive G.657.A1  
 1 = MM 62.5/125µm OM1  
 2 = MM 50/125µm OM2  
 3 = MM 50/125µm OM3  
 4 = MM 50/125µm OM4

#### 5 Stub Cable Construction

Leave Blank for No Stub  
 D = Distribution (I or X)  
 B = Breakout (X)  
 M = Micro Round (I, X, or O)  
 L = Loose Tube (X or O)  
 R = Ribbon (I, X, or O)  
 F = Flat Drop (Up to 24F) (O)

(I) = Indoor Only  
 (X) = Indoor/Outdoor Only  
 (O) = Outdoor Only

#### 6 Stub Jacket Type

Leave Blank for No Stub

FSC = PVC Coated Flexible Steel Conduit for Use With Ribbon

or

Choose 1 Option for Each Feature:  
 I = Indoor or X = I/O or O = Outdoor  
 R = OFNR or P = OFNP or L = LSZH\*  
 N = Non-Armored or A = Armored\*

\*Leave Blank for Outdoor Cable

#### 7 Stub Length

Leave Blank for No Stub  
 Add -PE for a Pulling Eye

XXXF = XXX Feet  
 XXXM = XXX Meters

Note: if using PVC coated flexible steel conduit, 2 meters or 6.6 feet of the total stub length will be provided as ribbon in mesh at the end of the stub