

# AGX Series

## Rackmount Enclosures

AGX Patch & Splice Series Rackmount Enclosures are available in a wide variety of sizes and configurations.

Individual panels are available in pre-term, patch only or splice only configurations or multiple panels can be secured together to achieve high fiber counts.

Typical configurations are composed of a stack of multiple termination shelves and one splice shelf.

Each fiber termination shelf is equipped with adapter panels and fanouts where the unconnectorized end of each fanout is routed from the rear of the termination shelf down to the splice shelf and into the splice organizers ready for splicing.

The unconnectorized end of each fanout is clearly identified to correspond to a termination shelf and to the connector positions within that shelf.



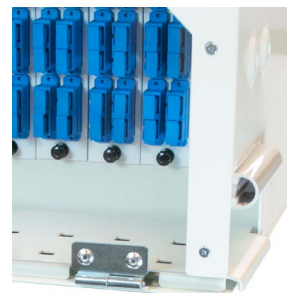
## Features

- Industry leading fiber management supports convenient user accessibility
- Easy network build with on-bay splicing
- Enclosures can be built without cable stubs eliminating riser requirements and cost
- All panels are 17" wide and 11" deep
- Fits 19", 23", or ETSI frames
- AGX Rackmount Enclosures only require mounting to the network frame, reducing installation time and cost
- Modular units allow for rapid network growth with matching hardware in various configurations
- All pigtailed are labeled for easy identification



## Applications

- Central office frames: LGX FDF, 23-inch and 19-inch wide mount frames
- Local Area Networks (LANs)
- Controlled Environment Vaults (CEV)
- Cable TV Headend
- Enterprise
- Private Networks



Bend radius guides protect patchcords from kinks and increased attenuation

# AGX Series

## Rackmount Enclosures

### 3RU (5.25") Patch and Splice



### Specifications

<b>Rack Units</b>	3
<b>Dimensions (Inches)</b>	5.25 x 17.0 x 11.0 (HxWxD)
<b>Adapter Plate Capacity</b>	4
<b>Patch Fiber Capacity</b>	72 (SC) or 144 (LC)
<b>Splice Tray Capacity</b>	1
<b>Single Fiber Capacity</b>	48 Fibers
<b>Ribbon Fiber Capacity</b>	216 Fibers or 18 Ribbons
<b>Mounting</b>	19" or 23" Frames
<b>Material</b>	1.5mm Thick Aluminum
<b>Material Finish</b>	White Powder Coat
<b>Weight (Empty) (lbs)</b>	6.5

### 4RU (7.00") Patch Only



### Specifications

<b>Rack Units</b>	4
<b>Dimensions (Inches)</b>	7.00 x 17.0 x 11.0 (HxWxD)
<b>Adapter Plate Capacity</b>	12
<b>Patch Fiber Capacity</b>	144 (SC) or 288 (LC)
<b>Mounting</b>	19" or 23" Frames
<b>Material</b>	1.5mm Thick Aluminum
<b>Material Finish</b>	White Powder Coat
<b>Weight (Empty) (lbs)</b>	7.0

### 5RU (8.75") Patch Only



### Specifications

<b>Rack Units</b>	5
<b>Dimensions (Inches)</b>	8.75 x 17.0 x 11.0 (HxWxD)
<b>Adapter Plate Capacity</b>	12 (Non-LGX)
<b>Patch Fiber Capacity</b>	144 (SC) or 288 (LC)
<b>Mounting</b>	19" or 23" Frames
<b>Material</b>	1.5mm Thick Aluminum
<b>Material Finish</b>	White Powder Coat
<b>Weight (Empty) (lbs)</b>	7.5
<b>Notable Features</b>	Longer adapter plates provide enhanced connector accessibility

**3RU (5.25") Splice Only**



**Specifications**

<b>Rack Units</b>	3
<b>Dimensions (Inches)</b>	5.25 x 17.0 x 11.0 (HxWxD)
<b>Splice Tray Capacity</b>	3
<b>Single Fiber Capacity</b>	144 Fibers
<b>Ribbon Fiber Capacity</b>	648 Fibers or 54 Ribbons
<b>Mounting</b>	19" or 23" Frames
<b>Material</b>	1.5mm Thick Aluminum
<b>Material Finish</b>	White Powder Coat
<b>Weight (Empty) (lbs)</b>	6.5

**4RU (7.00") Splice Only**



**Specifications**

<b>Rack Units</b>	4
<b>Dimensions (Inches)</b>	7.00 x 17.0 x 11.0 (HxWxD)
<b>Splice Tray Capacity</b>	6
<b>Single Fiber Capacity</b>	288 Fibers (No Slack Storage Space) (For Use as a Standalone Panel Only)
<b>Ribbon Fiber Capacity</b>	1,296 Fibers or 108 Ribbons
<b>Mounting</b>	19" or 23" Frames
<b>Material</b>	1.5mm Thick Aluminum
<b>Material Finish</b>	White Powder Coat
<b>Weight (Empty) (lbs)</b>	7.0

**5RU (8.75") Splice Only**



**Specifications**

<b>Rack Units</b>	5
<b>Dimensions (Inches)</b>	8.75 x 17.0 x 11.0 (HxWxD)
<b>Splice Tray Capacity</b>	6
<b>Single Fiber Capacity</b>	288 Fibers
<b>Ribbon Fiber Capacity</b>	1,296 Fibers or 108 Ribbons
<b>Mounting</b>	19" or 23" Frames
<b>Material</b>	1.5mm Thick Aluminum
<b>Material Finish</b>	White Powder Coat
<b>Weight (Empty) (lbs)</b>	7.5

# AGX Series

## Rackmount Enclosures

### ID Chart Holder



AGX panels feature a plexiglass front door with a front and rear facing ID chart Holder

### Accessories



12A1 Cable Clamp for Metallic Sheath Cable and for 0.400" to 0.999" Diameter Cable  
P/N: 104-384-490-SRE-W



12A2 Cable Clamp for Dielectric Sheath Cable and for 0.400" to 0.999" Diameter Cable  
P/N: 106-230-337-SRE-W



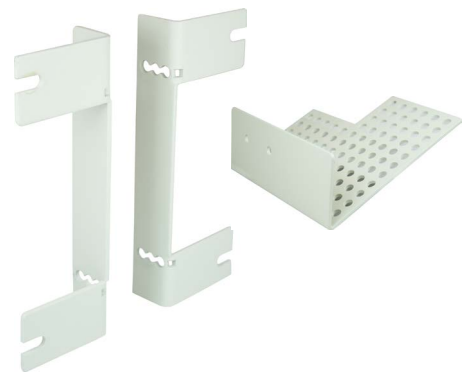
12A3 Cable Clamp for 0.25"-1.25" Diameter Cable  
P/N: 108-527-423



Flushmount Brackets for 5.25" Shelf  
P/N: LGX5INFMB



Flushmount Brackets for 7.00" Shelf  
P/N: LGX7INFMB



Flushmount and Strain Relief Bracket Kit for 7.00" Shelf in a Fiber Distribution Frame



