

Connector Grabber

Components and Installation Tools

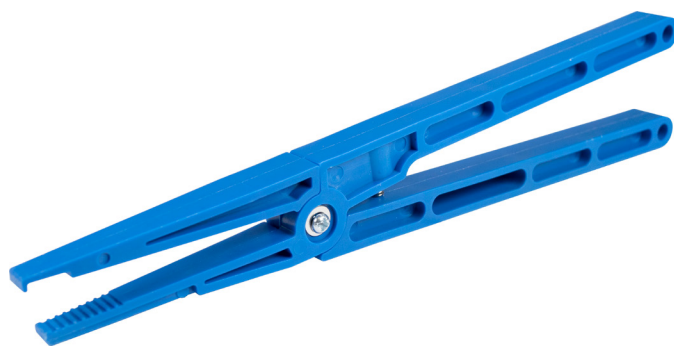
The Connector Grabber allows for the insertion or removal of a fiber optic connector in tight spaces when hand access is not possible.

Fiber optic system installations often have densely packed patch panels.

Although they are space efficient, these patch panel arrays often make simple insertion and extraction of individual connectors difficult, if not nearly impossible.

When small form-factor connectors like LCs are involved, these difficulties are exacerbated.

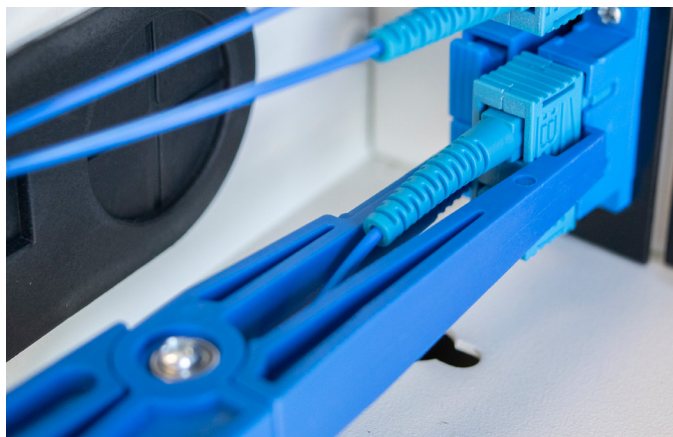
It has been designed to work with virtually all rectangular or square cross-section connectors, providing a positive grip on a connector without crimping adjacent fibers.



Removing an LC Connector



Removing an SC Connector



Specifications

Compatible Connectors	LC, MU, SC, E-2000, MT-RJ, and most other rectangular or square cross-section fiber optic connectors
Material	Nylon material offers excellent strength, stiffness, high temperature performance, and dimensional stability. Stainless steel return spring, nut, and bolt.
Durability	Tested to 1000 insertions/extractions without degradation of performance
Unique Features	Ergonomic handles and non-crimp jaws provide a positive grip on the connector and release tab while not crimping the fiber optic cables or connector boots in densely packed spaces
Part Number	CS-CGT

Removing an MPO Connector

