

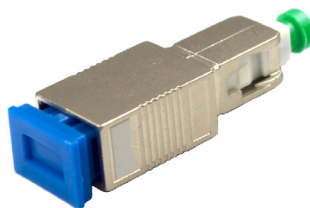
# Between Series Adapters

## Components and Installation Tools

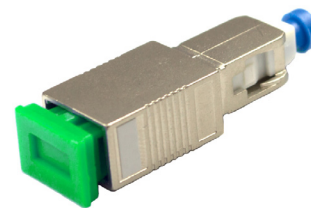
ARIA Between Series Adapters are used to quickly change a UPC connector into an APC connector or an LC connector into an SC connector.

These adapters enable the use of current patchcord stock where a transition to another polish type or connector type is needed to complete the circuit.

Adapter or 6" long 2/3mm singlemode bend insensitive G.657.A1 cable types available.



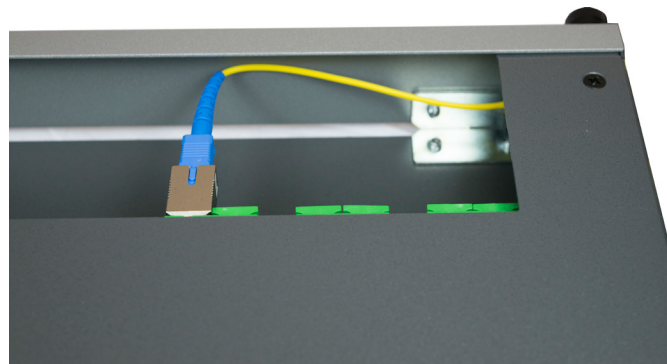
SCU F to SCA M Adapter



SCA F to SCU M Adapter



Easy to install on any patchcord or pigtail



Short size ensures proper cable bend radius in panels

### Specifications

<b>Insertion Loss</b>	≤0.2dB
<b>Return Loss UPC</b>	≥45dB
<b>Return Loss APC</b>	≥60dB
<b>Ferrule/Sleeve Material</b>	Ceramic
<b>Operating Temperature</b>	-20 to 75°C



SCU F to LCU M Cable



LCU F to SCU M Cable



SCU F to LCU F Adapter



SCA F to LCU F Adapter



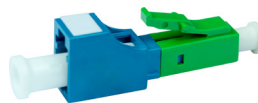
SCU F to LCU M Adapter



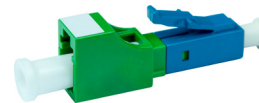
LCU F to SCU F Adapter



LCU F to SCU M Adapter



LCU F to LCA M Adapter



LCA F to LCU M Adapter

### Part Number

BSA- 1 - 2 - 3

**1** Side A Connector  
 Add F for Female or M for Male  
 SCU = SC/UPC  
 SCA = SC/APC  
 LCU = LC/UPC  
 LCA = LC/APC

**2** Side B Connector  
 Add F for Female or M for Male  
 SCU = SC/UPC  
 SCA = SC/APC  
 LCU = LC/UPC  
 LCA = LC/APC

**3** Style  
 A = Adapter  
 C = Cable