

Splice Cassette UHD Series

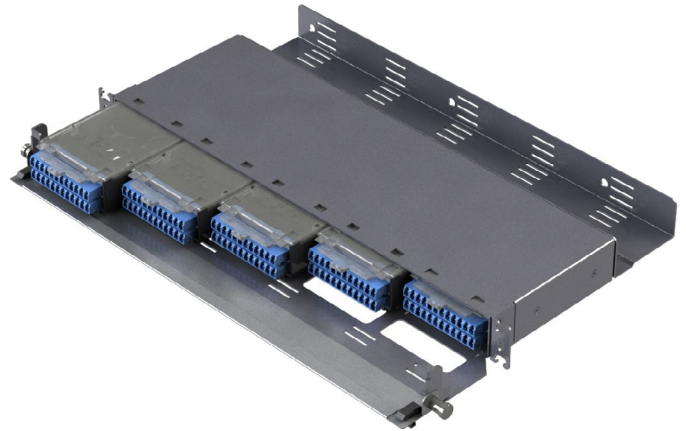
Cassettes and Modules

Splice Cassette UHD Series splice cassettes and enclosures support up to 120-Fibers per RU and are classified as high density (UHD) products.

One rack unit supports up to 5 UHD Series ARIA Splice Cassettes (ASCs) with support for 24-Fibers each.

The cassette features a compact footprint, intuitive fiber management, support for ribbon fiber, and maintains accessible ports with an ultra high density classification.

The supporting enclosure features a front management tray, removable rear management tray, removable door with port ID chart, and multiple rack mounting positions.



ASC UHD Series Cassette



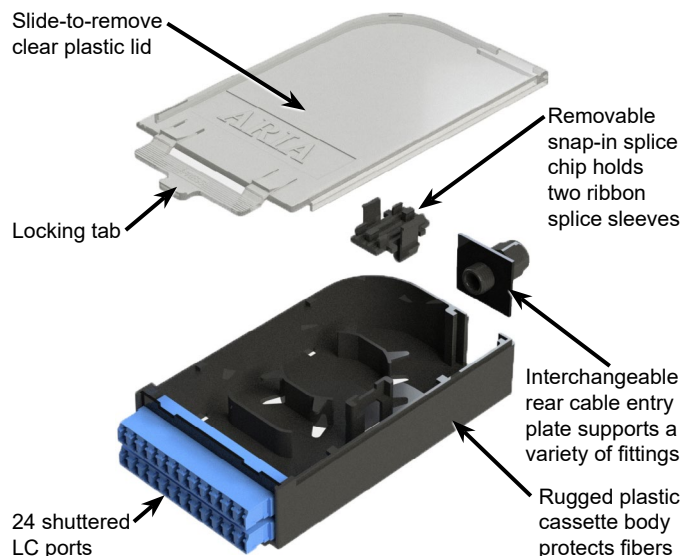
Specifications

Dimensions (Inches)	1.44 x 3.35 x 5.50 (HxWxD)
Fiber Capacity	24 LC
Compatibility	ARIA Splice Cassette UHD Series Enclosures
Material	ABS Plastic
Material Finish	Black with a Clear Lid
Weight (Empty) (lbs)	0.5



Cassette Features

- UHD Series ASC Cassettes provide UHD connectivity in a compact footprint without sacrificing connector port or fiber accessibility
- Simply press the locking tab above the ports to release the cassette from the enclosure
- The cassette has an intuitive interior with numerous fiber management guides that provide separation between components and promote ease of use.
- Patch & Splice, MPO Plug & Play, or Pre-Term configurations available
- Tie-wrap, cable clamp, or compression fitting cable attachment options
- VFL compatible connectors with translucent shutters provide enhanced dust protection

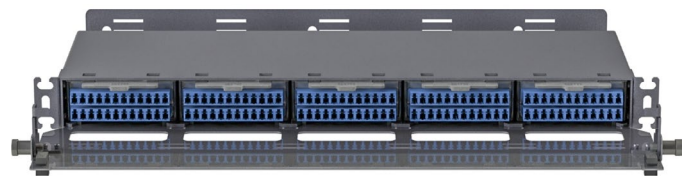


ASC UHD Series 1RU Enclosure



Specifications

Rack Units	1
Dimensions (Inches)	1.55 x 17.5 x 11.8 (HxWxD)
Dimensions Without Rear Management Tray	1.55 x 17.5 x 8.8 (HxWxD)
ASC UHD Capacity	5
Fiber Capacity	120 (LC)
Mounting	19" Frames
Material	1.5mm Thick Aluminum
Material Finish	Dark/Light Gray Powder Coat
Weight (Empty) (lbs)	3.0



Enclosure Features

- The rear cable management tray provides fiber organization flexibility and can be removed to reduce the overall depth of the panel if needed.
- The removable front door accommodates a port ID chart for easy identification.
- The rackmount brackets support multiple mounting positions and can be lowered onto rack screws.

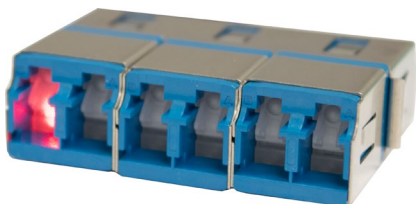
Removable Rear Management Tray

The panel can be modified to fit in spaces with limited clearance by removing the rear management tray to create a more compact enclosure.

The rear tray easily detaches by loosening the two thumbscrews on the left and right side.



VFL Compatible Shuttered LC Adapters



Accessories



Micro Compression Fitting
P/N: CF-XXS



Two-Piece Cable Clamp
P/N: ASC-CLAMP

Splice Cassette UHD Series

Cassettes and Modules

Part Number

ASC-UHD-

**1** Format

1RU = 1RU
CAS = Cassette

2 Adapter Type

Leave Blank for Panel
XCU = LC Shuttered
Singlemode UPC
XCA = LC Shuttered
Singlemode APC
XCM = LC Shuttered
Multimode UPC

3 Fiber Type

Leave Blank for Panel,
Pre-Term, or Plug & Play

S = SM 9/125µm G.652.D
B = SM 9/125µm Bend
Insensitive G.657.A1
L = SM 9/125µm Bend
Insensitive G.657.A2
1 = MM 62.5/125µm OM1
2 = MM 50/125µm OM2
3 = MM 50/125µm OM3
4 = MM 50/125µm OM4

4 Pre-Term or Plug & Play

Leave Blank for Panel,
No Pre-Term, or No Plug & Play

30R = 3.0mm OFNR Micro Cable
30P = 3.0mm OFNP Micro Cable
36R = 3.6mm OFNR Micro Cable
36P = 3.6mm OFNP Micro Cable
12M = 12 Fiber MPO Adapter(s)
24M = 24 Fiber MPO Adapter

5 Pre-Term Length

Leave Blank for No Pre-Term
Add -PE for a Pulling Eye

XXXF = XXX Feet
XXXM = XXX Meters

6 Pre-Term Breakout Length

Leave Blank for No Pre-Term

XXXF = XXX Feet
XXXM = XXX Meters

7 Pre-Term Connector Type

Leave Blank for No Pre-Term

SC = SC
LC = LC
FC = FC
ST = ST
E2 = E2000
MP = MPO
00 = No Connector

7 Pre-Term Polish Type

Leave Blank for No Pre-Term

U = UPC
A = APC*
F = Flat**
0 = No Connector

*Singlemode Only, Select for Single-
mode MPOs, and Unavailable for ST
**Multimode MPOs Only

8 Pre-Term MPO Type

Leave Blank for Non-MPO
Connector or no Pre-Term

Choose 1 option for each feature:
1 = 12 or 2 = 24 Fiber Connector
S = Standard or E = Elite Ferrule
F = Female or M = Male Guide Pins