

Wallmount Racks

Cable Management and Racks

ARIA Wallmount Racks provide a quick and easy way to wallmount panels designed for 19" rack applications.

Simply attach the rack to a secure mounting surface with the included fasteners and it's ready to mount panels.

The 3RU & 6RU feature a compact, open, one piece design with rounded corners that prevent damage to personnel and equipment. It requires no assembly.

The 11RU features a multi-piece design with press-fit nuts that make it easy to assemble and facilitates efficient storage, transportation and deployment.



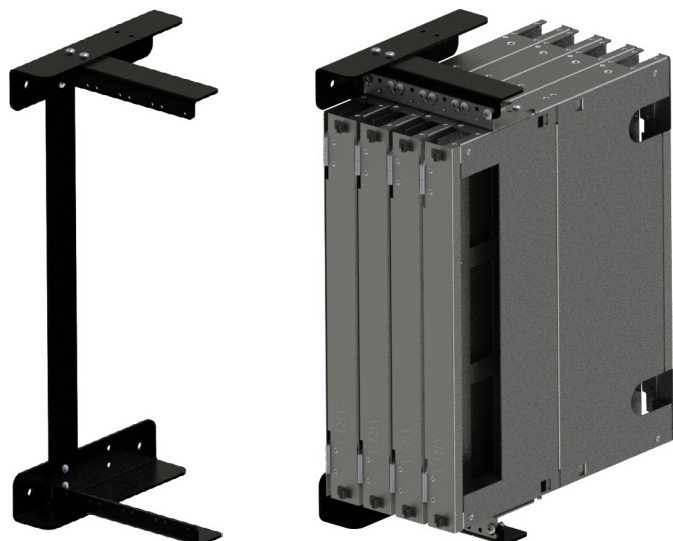
3RU Wallmount Rack



Specifications

Material	3.6mm Thick Steel
Material Finish	Black Powder Coat
Dimensions (Inches)	21.75 x 2.0 x 6.5 (HxWxD)
Panel Capacity	3RU
Weight (Empty) (lbs)	2.5
Weight Limit (lbs)	100
Part Number	3RU-WM-RACK

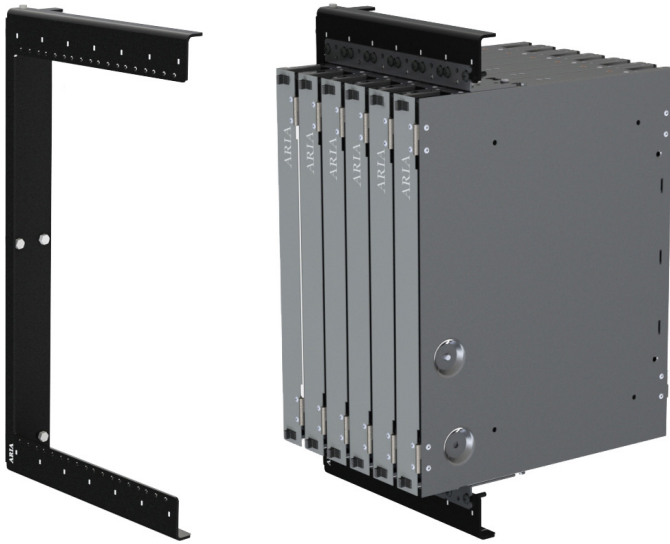
4RU Wallmount Rack



Specifications

Material	3.0mm Thick Aluminum
Material Finish	Black Powder Coat
Dimensions (Inches)	20.0 x 8.1 x 9.0 (HxWxD)
Panel Capacity	4RU
Weight (Empty) (lbs)	2.0
Weight Limit (lbs)	100
Part Number	4RU-WM-RACK

6RU Wallmount Rack



Specifications

Material	3.6mm Thick Steel
Material Finish	Black Powder Coat
Dimensions (Inches)	21.8 x 2.5 x 12.0 (HxWxD)
Panel Capacity	6RU
Weight (Empty) (lbs)	5.0
Weight Limit (lbs)	150
Part Number	6RU-WM-RACK

11RU Wallmount Rack



Regular Model Specifications

Material	2.0mm Thick Steel and 3.0mm Thick Aluminum
Material Finish	Black Powder Coat
Dimensions (Inches)	23 x 20.5 x 12.8 (HxWxD)
Panel Capacity	11RU
Weight (Empty) (lbs)	11.0
Weight Limit (lbs)	200
Part Number	11RU-WM-RACK

19" Deep Model Specifications

Material	2.0mm Thick Steel and 3.0mm Thick Aluminum
Material Finish	Black Powder Coat
Dimensions (Inches)	23 x 20.5 x 19.0 (HxWxD)
Panel Capacity	11RU
Weight (Empty) (lbs)	11.0
Weight Limit (lbs)	200
Part Number	11RU-DEEP-WM-RACK