

Cable Clamps

Cable Management and Racks

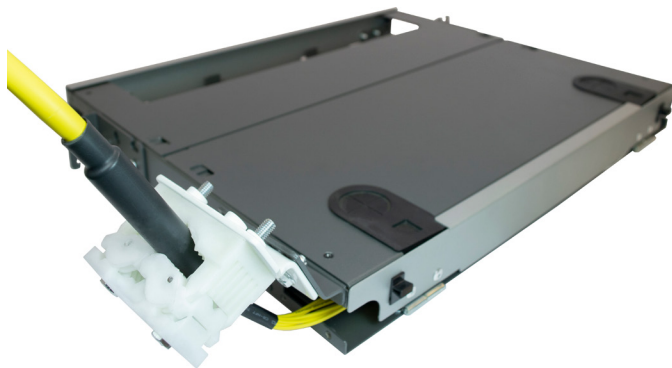
Cable Clamps secure cables to prevent movement and provide proper bend radius.

They can be directly attached to AGX, OSEC, and 2RU ARM panels or attached to ARIA strain relief brackets.

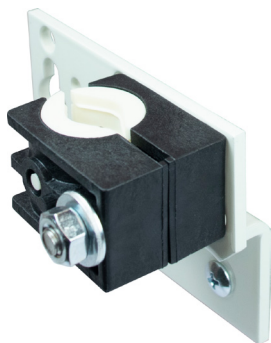
12AT2 cable clamps are used to secure dielectric sheath cables with an outside diameter of 0.4" to 1.0" (1.02 cm to 2.54 cm).

12A3 cable clamps are used to secure and ground both metallic and dielectric sheath cable types with an outside diameter of 0.25" to 1.50" (0.635 cm to 3.81 cm).

Grounding and bonding kits can be added to 12AT2 cable clamps for grounding support of metallic sheath cables.



12AT2 Cable Clamp and Accessories



12AT2 Cable Clamp
Attached to an SRE-W
Bracket
P/N: 12AT2-SRE-W



12AT2 Cable Clamp for
attachment to an SRB
P/N: 12AT2

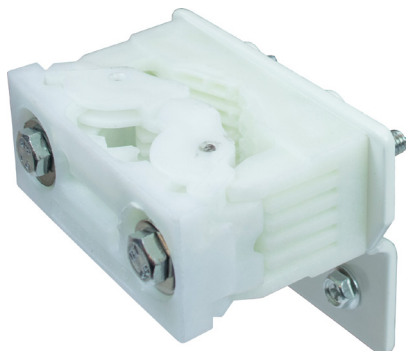


Wallmount Grounding and
Bonding Kit
P/N: GB-KIT



Rackmount Grounding Kit
P/N: RM-GROUND-KIT

12A3 Cable Clamp



Assembled 12A3 Cable Clamp



12A3 Cable Clamp for 0.25"-1.50" Diameter Cable
P/N: 12A3L-H