

Between Series Adapters

Adapters, Plates, Pigtails, Attenuators, and Reflectors

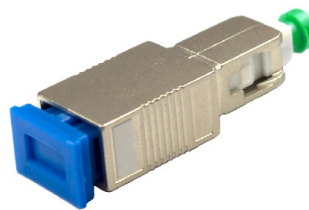
ARIA Between Series Adapters are used to quickly change a UPC type connector into an APC type connector or an APC type connector into a UPC type connector.

These adapters enable the use of current patchcord stock where a transition to UPC or APC is needed to complete the circuit.

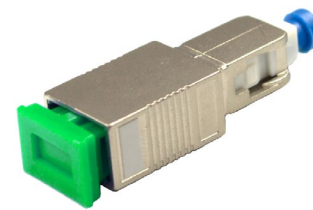
ARIA Between Series Adapters are Telcordia GR-326-CORE compliant.



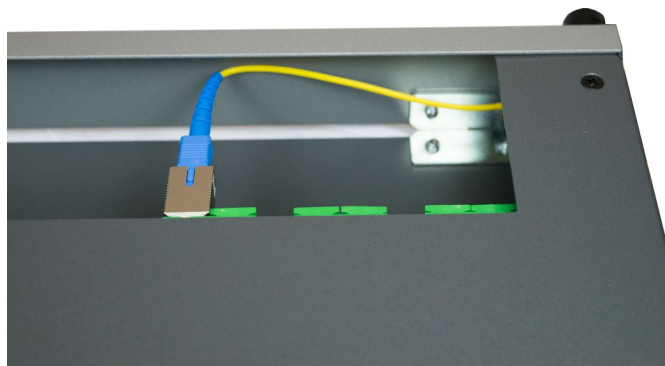
Easy to install on any patchcord or pigtail



SC/UPC Female to SC/APC Male



SC/APC Female to SC/UPC Male



Short size ensures proper cable bend radius in patch panels

Specifications

Insertion Loss	≤0.2dB
Return Loss UPC	≥45dB
Return Loss APC	≥60dB
Ferrule/Sleeve Material	Ceramic
Operating Temperature	-20 to 75°C
Storage Temperature	-40 to 85°C

Features

- Low Insertion Loss
- Excellent Return Loss
- Environmentally Stable and Reliable



LC/UPC Female to LC/APC Male

Applications

- Telecommunications
- CATV
- Fiber to the Home
- Local Area Network
- (LAN) Test Equipment



LC/APC Female to LC/UPC Male

Part Number

BSA- 1 1 1 2 2 2

*Only available with SC female connector types

**Only available with LC female connector types

1 Female Connector Type

SCU = SC/UPC
SCA = SC/APC
LCU = LC/UPC
LCA = LC/APC

2 Male Connector Type

SCU = SC/UPC*
SCA = SC/APC*
LCU = LC/UPC**
LCA = LC/APC**