

SC Connectors and Adapters

Components

Overview

ARIA offers a complete line of SC simplex and duplex connectors and mating adapters.

SC connectors are a non-optical disconnect connector type with a push/pull housing. ARIA SC connectors offer superior insertion and return loss performance and meet Telcordia GR-326-CORE requirements. ARIA duplex SC connectors feature a 1 piece design that is JIS Hirose and NTT compatible. ARIA simplex SC connectors feature a 1 piece design that is NTT and SII compatible.

Zirconia ceramic and phosphor bronze alignment sleeves are available. Snap mount or screw mount installation type adapters are also offered. Boot and dustcap colors offered are: blue, black, yellow, orange, white, and more.

SC adapters with shutters are also available and come equipped with a spring loaded shutter which automatically closes when a connector is removed from the adapter to shield against laser radiation and dust contamination.

Features

- JIS 874-19 & JIS C5973
- IEC874-14
- TIA 568 Fiber Channel
- Telcordia GR326-CORE
- Performance is guaranteed

Connector Part Numbers

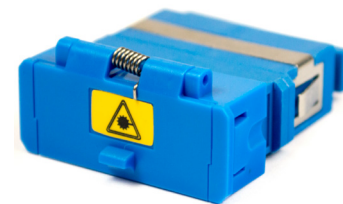
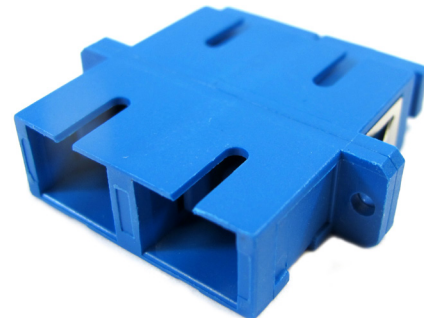
MM, UPC, Simplex, 0.9mm Cord Size - P/N: 71S-3000
SM, UPC, Simplex, 0.9mm Cord Size - P/N: 71S-4000
MM, UPC, Simplex, 2.0mm Cord Size - P/N: 71S-5010
SM, UPC, Simplex, 2.0mm Cord Size - P/N: 71S-6010
MM, UPC, Simplex, 3.0mm Cord Size - P/N: 71S-5000
SM, UPC, Simplex, 3.0mm Cord Size - P/N: 71S-6000
MM, UPC, Duplex, 0.9mm Cord Size - P/N: 790-3000
SM, UPC, Duplex, 0.9mm Cord Size - P/N: 790-4000
MM, UPC, Duplex, 2.0mm Cord Size - P/N: 790-5010
SM, UPC, Duplex, 2.0mm Cord Size - P/N: 790-6010
MM, UPC, Duplex, 3.0mm Cord Size - P/N: 790-5000
SM, UPC, Duplex, 3.0mm Cord Size - P/N: 790-6000
SM, APC, 0.9mm Cord Size - P/N: 760-4000
SM, APC, 2.0mm Cord Size - P/N: 760-6000
SM, APC, 3.0mm Cord Size - P/N: 760-2000

Specifications

- Insertion Loss : 0.15 dB (SM) and 0.2 dB (MM) typical
- Return Loss: >55dB typical (singlemode)
APC: 65 dB typical
- Temperature Range : -40°C to +75°C
- Durability: <0.2dB change after 500 cycles

Adapter Part Numbers

Simplex with Zirconia Sleeve - P/N: 730-1000
Simplex with Phosphor Bronze Sleeve - P/N: 730-2000
Duplex with Zirconia Sleeve - P/N: 780-1000
Duplex with Phosphor Bronze Sleeve - P/N: 780-2000



SC/UPC Duplex with Shutter