

Swing-Out Series

Rackmount Enclosures



ARIA Swing-Out Series Patch & Splice Rackmount Enclosures come in either a 1RU, 2 adapter plate capacity or a 2RU, 4 adapter plate capacity configuration.

The swing-out tray allows easy access to terminations and splicing.

Enclosure can be terminated with adapters, pigtails, or a pre-terminated stub cable.

1RU Features Jumper Entry Grommet



1RU Swingout



Specifications

Rack Units	1
Dimensions (Inches)	1.75 x 17.0 x 11.0 (HxWxD)
Adapter Plate Capacity	2
Fiber Capacity	24 (SC) or 48 (LC)
Mounting	19" or 23" Frames
Material	1.5mm Thick Steel
Material Finish	Black Powdercoat
Weight (Empty) (lbs)	8.5

2RU Swingout

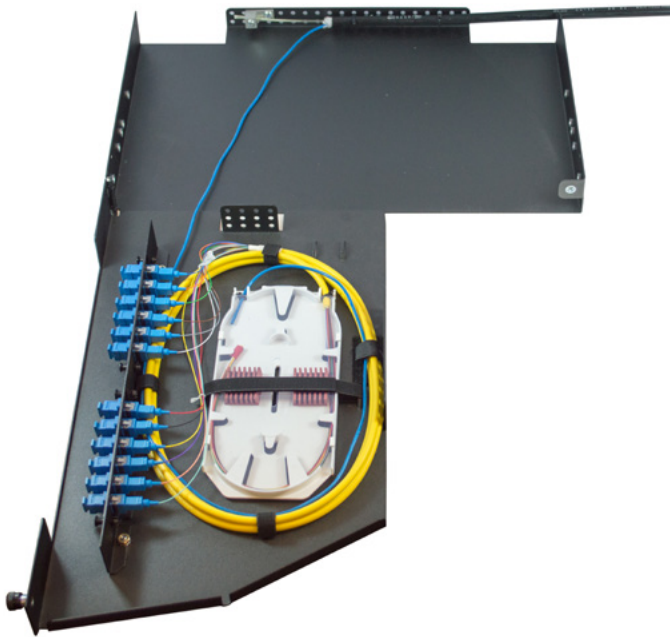


Specifications

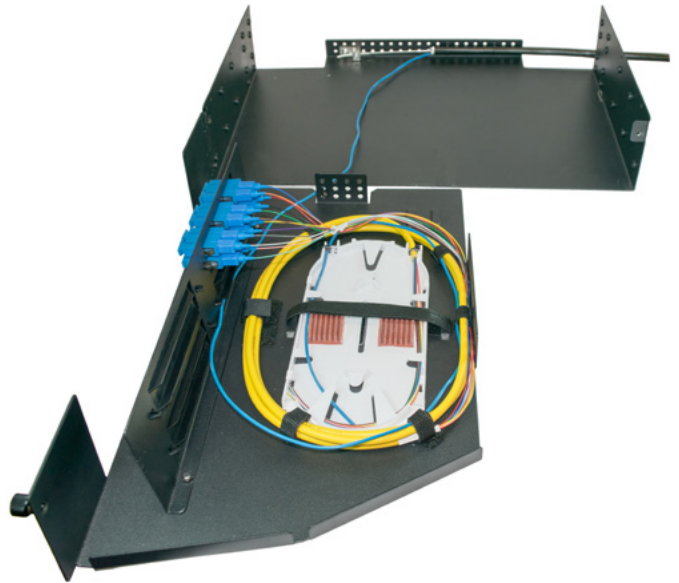
Rack Units	2
Dimensions (Inches)	3.5 x 17.0 x 11.0 (HxWxD)
Adapter Plate Capacity	4
Fiber Capacity	48 (SC) or 96 (LC)
Mounting	19" or 23" Frames
Material	1.5mm Thick Steel
Material Finish	Black Powdercoat
Weight (Empty) (lbs)	9.5

Swing-Out Series Rackmount Enclosures

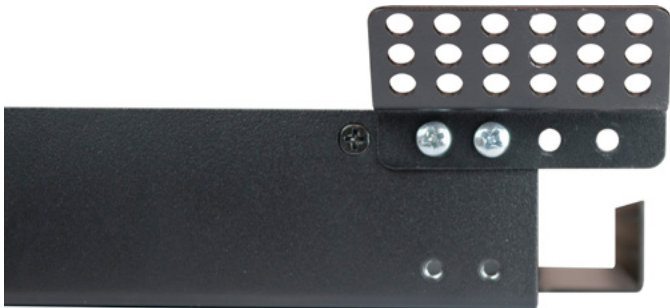
1RU Interior View (Lid Removed)



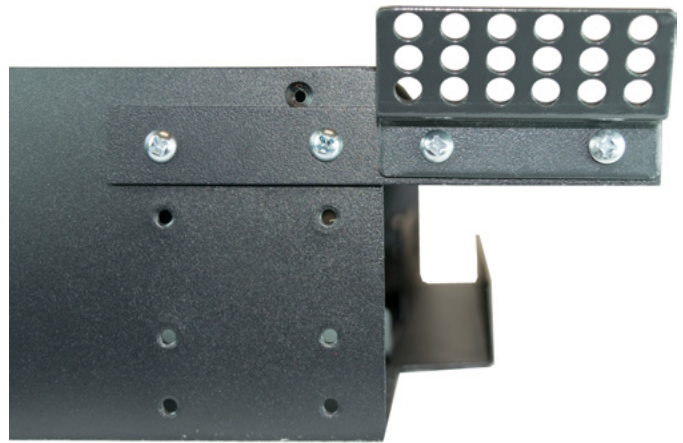
2RU Interior View (Lid Removed)



1RU Strain Relief Bracket Support



2RU Strain Relief Bracket Support



Accessories



Swing Out Strain Relief Bracket Kit for 1RU
P/N: SWRM-CLMP



Swing Out Strain Relief Bracket Kit for 2RU
P/N: SRB-2RUSO

Part Number



1 Enclosure
 1 = 1RU, 2 Adapter Plate Capacity
 2 = 2RU, 4 Adapter Plate Capacity

2 Adapter Plate Type
 06 = 6 Port (SC/FC/ST)
 08 = 8 Port (SC/FC/ST)
 12 = 12 Port (SC/LC/FC/ST)
 24 = 24 Port (LC) (Ribbon Only)

3 Adapter Plate Quantity
 1 = 1 Plate
 2 = 2 Plates
 3 = 3 Plates
 4 = 4 Plates

4 Adapter Type
 Singlemode
 SCU = SC/UPC
 SCA = SC/APC
 LCU = LC/UPC
 LCA = LC/APC
 FCU = FC/UPC
 FCA = FC/APC
 STU = ST/UPC
 Multimode
 SCM = SC
 LCM = LC
 FCM = FC
 STM = ST

5 Pigtail
 N = No Pigtail or Pre-Term
 M = 900 μm in Mesh
 D = Distribution Style (MIC)
 R = Ribbon in Mesh

Note: 3 meter pigtail length is standard

6 Fiber Type
 Singlemode
 S = SMF-28e+
 B = SMF Bend Insensitive G.657.A1
 Multimode
 1 = 62.5/125μm OM1
 2 = 50/125μm OM2
 3 = 50/125μm OM3
 4 = 50/125μm OM4

7 Splice Trays
 N = None
 Y = Yes*
 *This enclosure comes standard with 4"x8" splice trays in 24 fiber single fiber fusion or 6 position ribbon fiber mass fusion configurations.

8 Stub Cable Type
 Leave Blank for No Stub
 Indoor
 IR = Riser Rated
 IP = Plenum Rated
 IA = Interlocking Armor Plenum Rated
 Indoor/Outdoor
 XR = Riser Rated
 XP = Plenum Rated
 XC = Central Tube Riser Rated
 Outdoor
 ON = Non-Armored
 OA = Armored Central Tube
 OL = Armored Loose Tube
 AJ = Non-Armored Alternative Jacket
 OR = Ribbon Armored Central Tube
 FD = Flat Drop

9 Stub Length
 Leave Blank for No Stub
 Add -PE for a Pulling Eye
 XXXF = XXX Feet
 XXXM = XXX Meters